

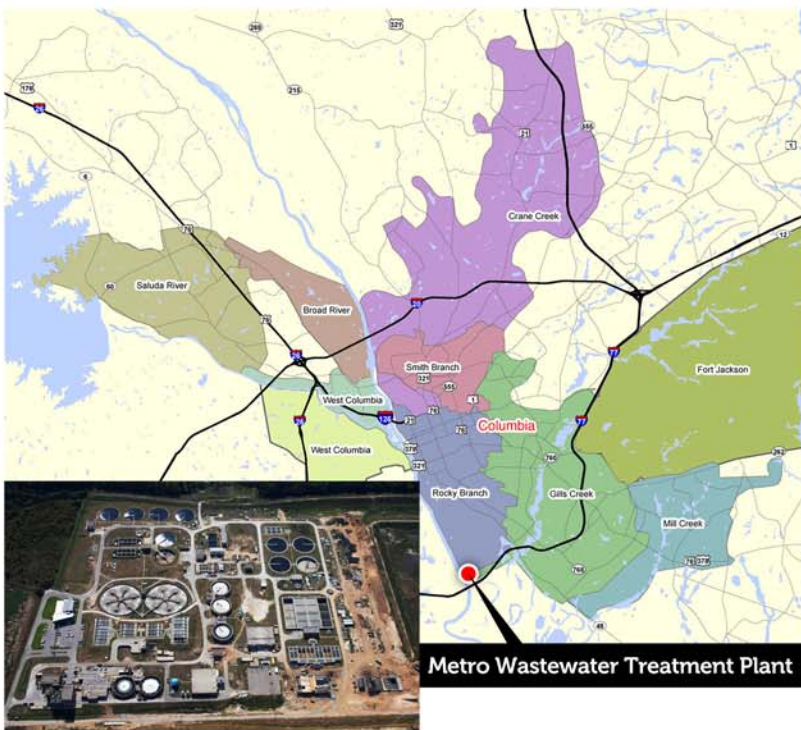
# Clean Water 2020



Columbia's Clear Vision For Clean Water

## City of Columbia's Wastewater System

The City's wastewater system serves approximately 60,000 customers and covers an area of roughly 120 square miles. It maintains more than 1,000 miles of wastewater collection system piping, more than 50 pump stations, nearly 30,000 manholes, and operates a 60 million gallon-per-day (MGD) wastewater treatment plant.



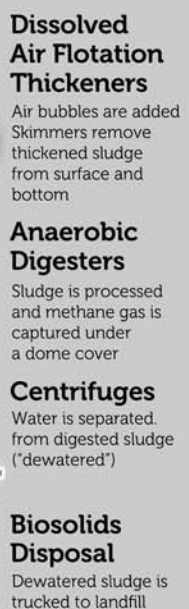
The wastewater system consists of two major components: the Metro Wastewater Treatment Plant and the wastewater collection system of piping networks and pump stations.

## How the Wastewater Treatment Process Works

### LIQUID TRAIN



### SOLIDS TRAIN



**LEARN MORE!**

For more information, visit  
[www.columbiasc.net/wastewater](http://www.columbiasc.net/wastewater)